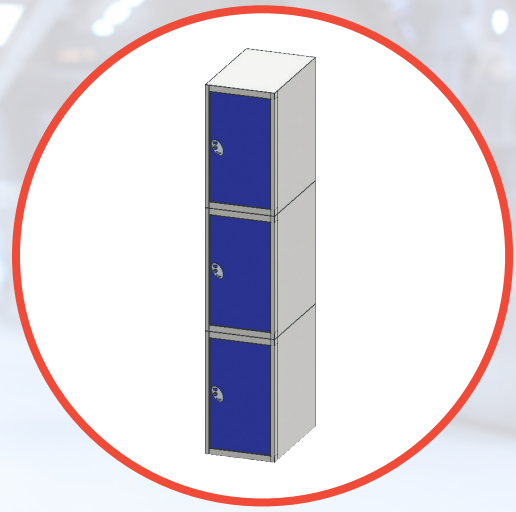


INTRODUCING

SPACE. Providing the best storage for the best bikes. Supporting cycling to work.



SPACE

Folding Bike Lockers

SPACE OVERVIEW

SPACE our established folding bike locker solution. Manufactured in our UK facility from strong steel. High quality and practical. Personalise with our range of configurations and colours. SPACE is easy to install and easy to clean.

Products are made to order, so your order gets the attention to detail it deserves. Please call for alternative and bespoke requests on **02920 859600**

SPACE BENEFITS

- Secure and lockable
- Encouraging healthier, happier and wealthier employees
- Streamline design, providing maximum capacity and space efficiency
- High quality and practical
- Strong and durable
- Supporting cycling to work - cleaner air and reduced pollution

COMPANY STANDARDS & MEMBERSHIPS



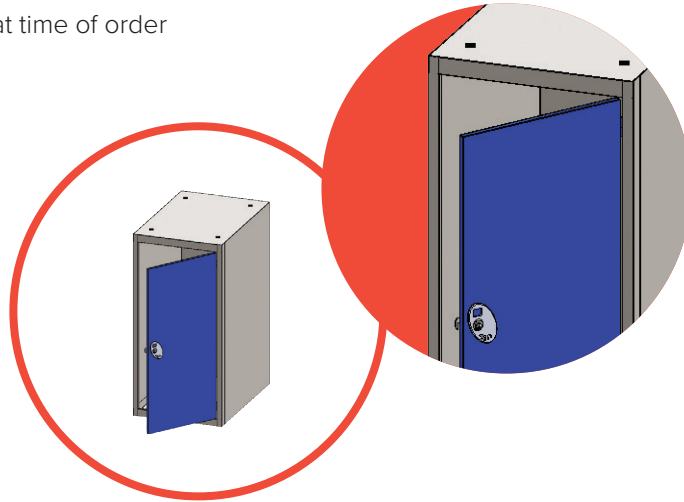
STANDARD SPECIFICATION

- Steel Carcass / Doors
- Spot welded design
- Coated in our standard hard-wearing scratch/knock-resistant powder paint
- Secure key lock, supplied with 2 keys
- Maintenance friendly, indoor use
- Gang holes
- Stackable maximum of 3 high recommended
- Delivered assembled, supplied empty
- Note if you would like a top unit with no holes for stacking please specify at time of order

OPTIONAL EXTRAS

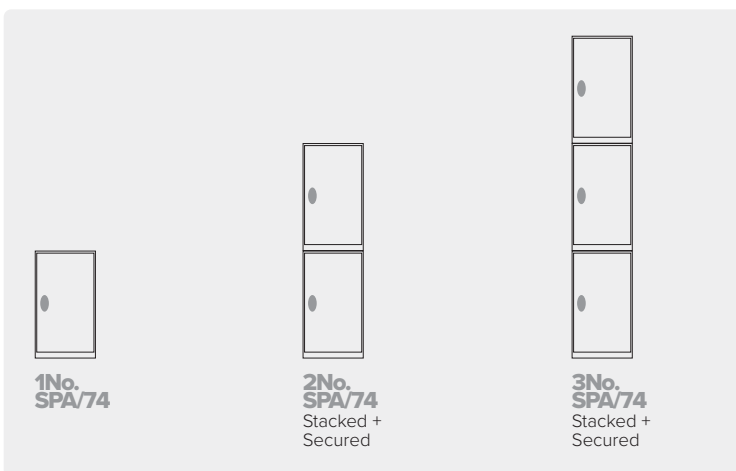
- Accessories / Internal fittings - hooks
- Lock options
- Perforated, ventilated
- Bespoke / Premium paints and finishes

730H MODULE



CONFIGURATIONS

730H MODULES



STEEL PAINT

Paints unless detailed below are MATT finish - 30% Gloss.

STANDARD COLOURS



BLACK
GAK-MN204E



DAFFODIL
GAK-EE250E



IRIS
GAK-EJ201E



FLINT
GAK-EL209E



POPPY
GAK-EG290E



IRISH
GAK-EK280E



CORNFLOWER
GAK-EJ203E



SAND
GAK-EE220E



LIGHT GREY
GAK-EL206E

PREMIUM COLOURS - OPTIONAL EXTRA



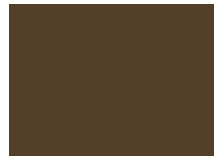
GRAPHITE - TEXTURE
GAK-MW333E



WHITE RAL 9003
GAK-MA585E



HEATHER
GAK-EH227E



CHOCOLATE
GAK-EM210E



PINE
GAK-EF200E



PEARL
GAK-ED204E



**CLEAR LACQUER
FINISH**



REEF
GAK-EK221E



GLACIER
GAK-EK216E

SUSTAINABLE DESIGN

Ongoing investment in facilities, equipment and systems means we continuously improve business efficiency, whilst significantly enhancing the working environment for our people.



**SUSTAINABLE
RESOURCES**



**MANUFACTURING
& DESIGN**

Less than 1.5% product
waste occurs per unit.



DISTRIBUTION

We have our own vehicles
and installation teams.
Successfully limiting
packaging requirements.



**CONSUMER /
BUSINESS USE**



**AFTER USE
RECYCLE**

The consumers choice
to re-use or re-cycle.