

EXTERNAL STEEL LOCKERS

INTRODUCING outdoor weather resistant steel lockers.

Designed to withstand rain, snow
and ice, without compromising
security.



EXTERNAL Weather Resistant Lockers

EXTERNAL OVERVIEW

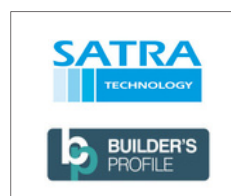
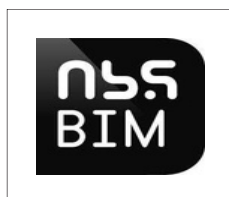
Our EXTERNAL weather-resistant steel lockers are the ideal solution for your outdoor spaces. We have designed this locker to withstand rain, snow, ice, and extreme temperatures without compromising security. We recommend placing our External Lockers under a canopy or shelter for longevity.

Products are made to order, so your order gets the attention to detail it deserves. Most frequently specified options are detailed, please call for alternative or bespoke requests on **02920 859600**

EXTERNAL BENEFITS

- Designed to withstand the elements
- Wet area Cam lock as standard
- Boosts security
- Optimises outdoor space
- Position banks of lockers against a wall
- Durable and strong: sides, back and front pillars are cut and folded from a single steel sheet, providing greater rigidity to the locker.
- Streamline aesthetics

Our Standards and Awards. Inspiring Confidence.



STANDARD SPECIFICATION

- Steel Carcass / Steel Doors
- Standard paint finishes
- Spot welded design
- Key lock, supplied with 2 keys
- Flush sides, fully welded carcass
- Side gang holes - nuts + bolts supplied
- Locker doors are fitted with a vertical stiffener for added strength
- Internal fittings - detailed below

OPTIONAL EXTRAS

- Lock options: Wet area Cam lock as standard. Wet area Dual £1 coin lock, Token lock, RFID lock also available.
- Numbering system
- Integral sloping top
- Nests of 2 and 3
- Additional fittings - coat rails, hooks, stands

1800 HIGH LOCKERS



EXT18D1**
H 1800mm
Options
W 225 X D 300 (N2)
W 300 X D 375
W 375 X D 450*
W 450 X D 525*
W 525 X D 600*
W 600 X D 600*
Includes shelf
350mm from top
+ two rear coat hooks
*Includes a coat rail
+ one rear coat hook



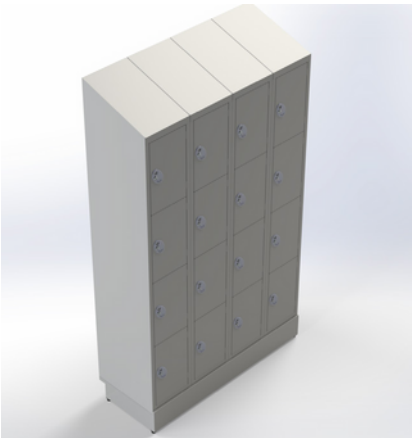
EXT18D2**
H 1800mm Options
W 225 X D 300 (N2)
W 300 X D 375 W
375 X D 450 W 450
X D 450 DOOR H
835mm Includes two
coat rear hooks in
each locker



EXT18D3**
H 1800mm Options
W 225 X D 300 (N2)
W 300 X D 375 W
375 X D 450 W 450
X D 450 DOOR H
568mm No internal
fittings



EXT18D4**
H 1800mm Options
W 225 X D 300 (N2)
W 300 X D 375 W
375 X D 450 W 450
X D 450 DOOR H
425mm No internal
fittings



1800 HIGH LOCKERS



EXT18D5**
H 1800mm
Options
W 225 X D 300
W 300 X D 375
W 375 X D 450
W 450 X D 450
DOOR H 340mm
No internal fittings



EXT18D6**
H 1800mm
Options
W 225 X D 300
W 300 X D 375
W 375 X D 450
W 450 X D 450
DOOR H 282mm
No internal fittings



EXT18D8**
H 1800mm
Options
W 300 X D 300
W 300 X D 375
W 300 X D 450

DOOR H 212mm
No internal fittings



EXT18D10**
H 1800mm
Options
W 300 X D 300
W 300 X D 375
W 300 X D 450

DOOR H 169mm
No internal fittings

Bespoke options available
email [projects@
garran-workspaces.co.uk](mailto:projects@garran-workspaces.co.uk)
for your FREE quote

STEEL PAINT

DOOR / CARCASE FINISHES

Paints unless detailed below are MATT finish - 30% Gloss.
Feature BioCote antimicrobial technology which reduces the presence of microbes by up to 99.99%. BioCote is permanent and complements existing cleaning practices.



STANDARD COLOURS



BLACK
GAK-MN204E



IRIS
GAK-EJ201E



WHITE RAL 9003
GAK-MA585E



IRISH
GAK-EK280E



LIGHT GREY
GAK-EL206E



CORNFLOWER
GAK-EJ203E



POPPY
GAK-EG290E



FLINT
GAK-EL209E

PREMIUM COLOURS - OPTIONAL EXTRA - MOQ 10* Units



SILVER TEXTURE
GAK-MW333E



GLACIER
GAK-EK216E



HEATHER
GAK-EH227E



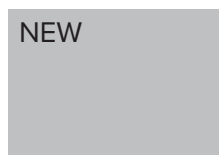
PEARL
GAK-ED204E



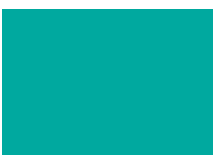
CHOCOLATE
GAK-EM210E



PINE GREEN
GAK-EF200E



CLEAR LACQUER
FINISH



REEF
GAK-EK221E



DAFFODIL
GAK-EE250E



SAND
GAK-EE220E



PASTEL ORANGE
RAL 2003
*MOQ 20



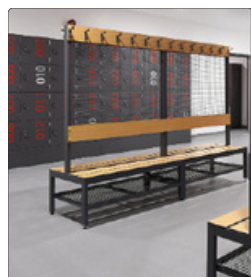
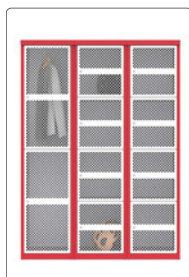
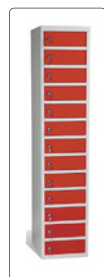
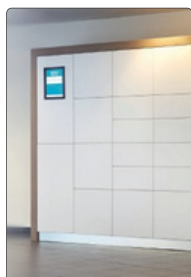
SILVER
RAL 9006

Clear lacquer, BioCote antimicrobial coating not included.

FIND YOUR PERFECT PRODUCT

Looking for a different solution? Try checking our alternative ranges;

- Premier Lockers - Steel Carcass / SGL doors
- SMART Lockers
- Heavy Duty Lockers
- Small Compartment Lockers
- Laptop Lockers
- Cloakroom Collections with Benches
- Cupboards
- Protective Screens
- Hygiene Hubs
- Technology options
- Industry Specific Lockers



SUSTAINABLE DESIGN

Ongoing investment in facilities, equipment and systems means we continuously improve business efficiency, whilst significantly enhancing the working environment for our people.

